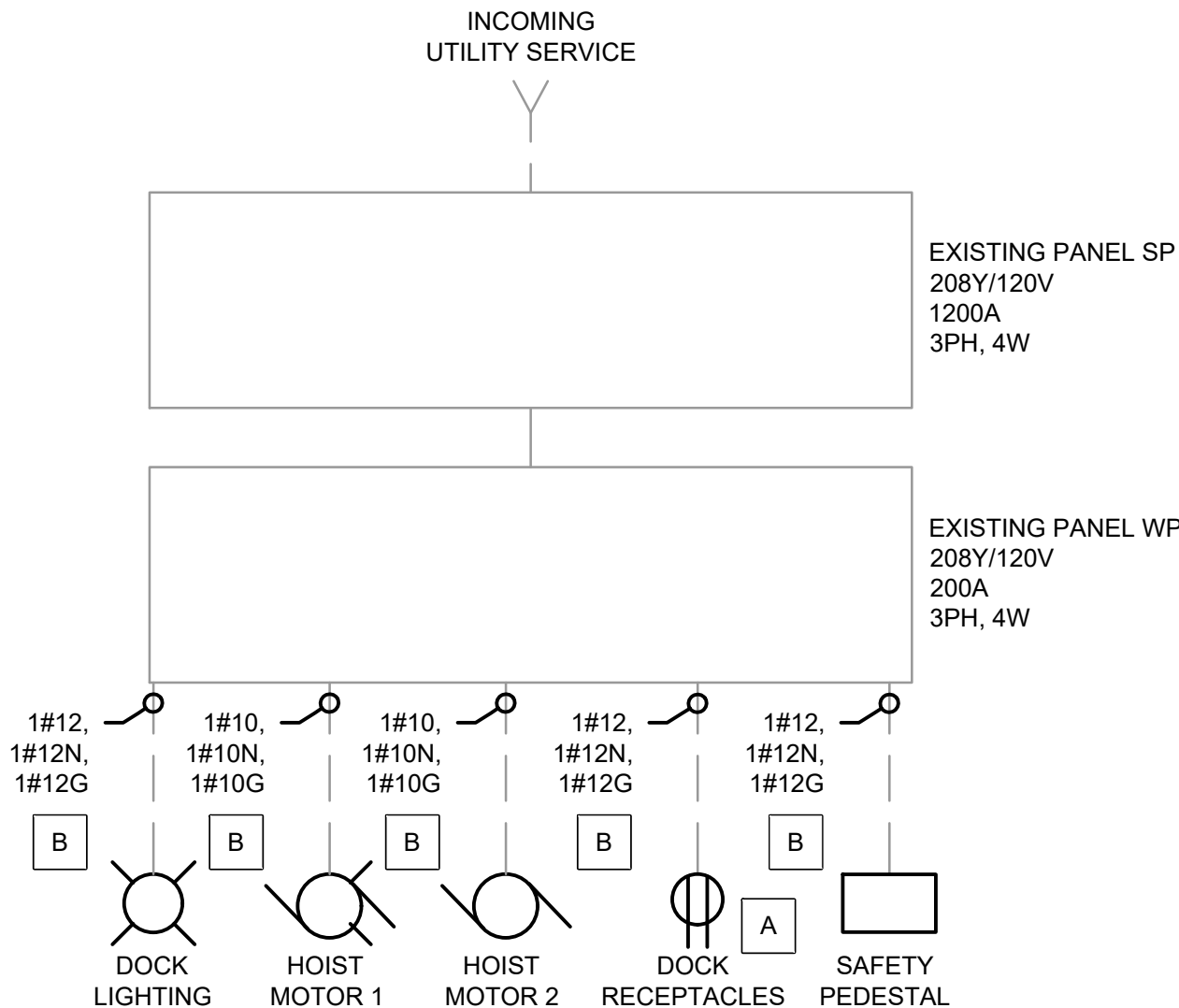


KEY NOTES

- A. RECEPTACLES SHALL BE:  
WP-WEATHERPROOF  
CR-CORROSION RESISTANT  
GF-GROUND FAULT.
- B. SEE PLANS FOR CONDUIT ROUTING.



ONE-LINE DIAGRAM  
NO SCALE

LIGHTING FIXTURE SCHEDULE									
MARK	MANUFACTURER	CATALOG NUMBER	LAMPS- NUMBER/ TYPE	FIXTURE WATTS	LUMEN OUTPUT	TOTAL LLF	CCT	MOUNTING	REMARKS
P1	LITHONIA LIGHTING	DSX0 LED P1 AMBLW AMCRI AFR	LED	27.42	1359	0.8	2,700K	POLE	15' MH
NOTES									
1.	THE FIXTURES LISTED ABOVE ARE THE BASIS OF DESIGN. TO SUPPLY EQUIVALENT FIXTURES PROVIDE THE FOLLOWING WITH BID DOCUMENTS: 1) COMPLETE PRODUCT SPECIFICATION SHEETS MARKED WITH CATALOG NUMBER AND FIXTURE TYPE, 2) CALCULATION REPORTS SHOWING THE DESIGN CRITERIA HAS BEEN MET, 3) A SUMMARY OF ALL ALTERATIONS DEVIATING FROM THE BASIS OF DESIGN, 4) ELECTRONIC COPIES OF THE IES FILES USED, 5) WRITTEN VERIFICATION THAT THE SUBMITTED FIXTURES MEET THE REQUIREMENTS OF THE CONTRACT DOCUMENTS. EQUIVALENT FIXTURES SHALL BE VERIFIED BY THE ENGINEER FOR ADEQUACY DURING THE BID REVIEW PHASE. THE CONTRACTOR SHALL STILL BEAR THE RESPONSIBILITY OF PROVIDING AND INSTALLING FIXTURES THAT MEET THE DESIGN CRITERIA AND THE QUALITY OF THE BASIS OF DESIGN PRODUCTS, AT NO ADDITIONAL COST.								

LIGHTING DESIGN CRITERIA								
APPLICATION	HORIZONTAL TARGETS			VERTICAL TARGETS			UNIFORMITY TARGETS	
	E (fc)	TYPE	ELEV.	E (fc)	TYPE	ELEV.	MAX:MIN	AVG:MIN
HATTERAS DOCK	0.5	AVG	FLOOR	N/A	N/A	N/A	4:1	10:1
1. DESIGN CRITERIA ARE BASED ON THE UFC 3-530-01								

ANSI D (34"x22")

M

M

MOTT  
MACDONALD

930 Main Campus Drive,  
Suite 200  
Raleigh, NC 27606  
License No. F-0669  
T +1 (919) 552 2253  
F +1 (919) 552 2254  
www.mottmacamericas.com

GRAPHIC SCALE

Digitally signed by Andrew K Gibbs  
Date: 2026.02.17 08:02:06-06'00'

PROJECT ENGINEER

NORTH CAROLINA  
PROFESSIONAL  
SEAL  
041677  
ANDREW K. GIBBS  
P.E.

ANDREW K. GIBBS, P.E.  
NC LICENSE: 041677

Designed By	RICHARD FERREIRA	County	DARE COUNTY		
Entered By	RICHARD FERREIRA	Division	FERRY DIVISION		
Project Engineer	ANDREW GIBBS	Plan Date	1-14-2026		
Project Manager	ALLISON THORBURN				
Rev.	Date	Drawn	Description	Ch'k'd	App'd

NCDOT PASSENGER FERRY  
DOCK REPLACEMENT -  
HATTERAS ISLAND

E-003  
ELECTRICAL DIAGRAMS